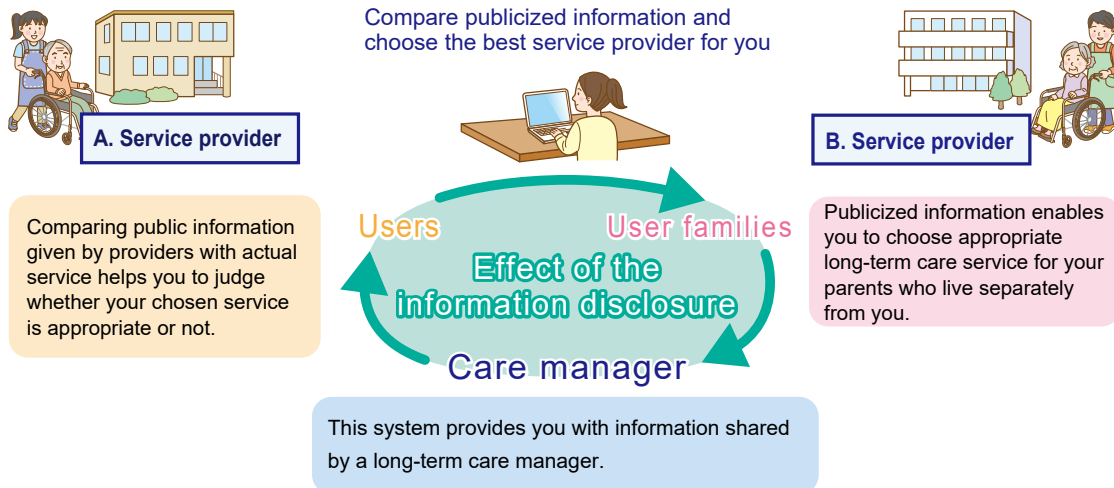


How to choose a long-term care service

- When using a long-term care service insurance system, the individual in need of care should use services with a company that best suits him/her. If you cannot decide which services and which service provider you should utilize, consult with your municipal office or comprehensive community support center.
- If you have your own personal long-term care manager, choose necessary services under his/her supervision.
- Under the “long-term care service information publication system,” users are able to compare different providers and select one that appeals to them.

Long-term care service information publication system

Using the Internet, anyone can access information concerning services provided by business offices as well as operations at any time.



Evaluation system conducted by assigned evaluation body for welfare service

A third evaluation body, who is not a business operator or user conducts user investigations for the purpose of investigating level of user satisfaction, as well as business evaluations that include both service description and organizational management, based on self-evaluation of staff and visits to business offices.

The results are shown publicly on the Internet. In addition, policy emphasized by the organizations are also presented. Site users may also select a business on the site.



Check “Tokyo Fukushi Navigation” <http://www.fukunavi.or.jp> for long-term care service information publication system and assigned evaluation institutions for welfare service.